

## Floor Plans

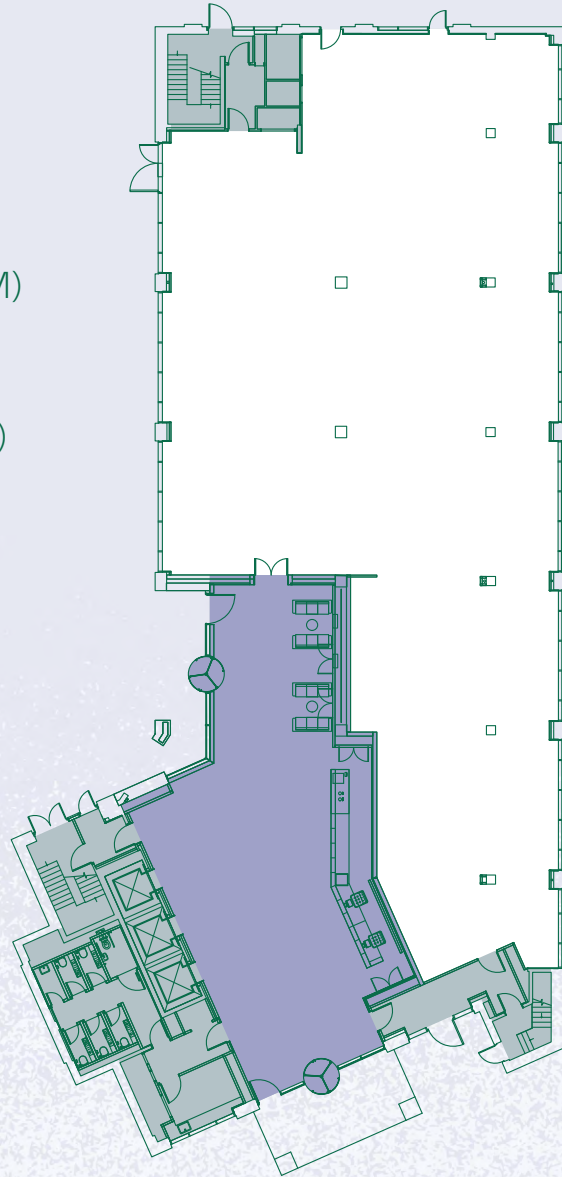
### Ground Floor

#### Office

7,363 Sq Ft (684 Sq M)

#### Reception

2,314 Sq Ft (215 Sq M)

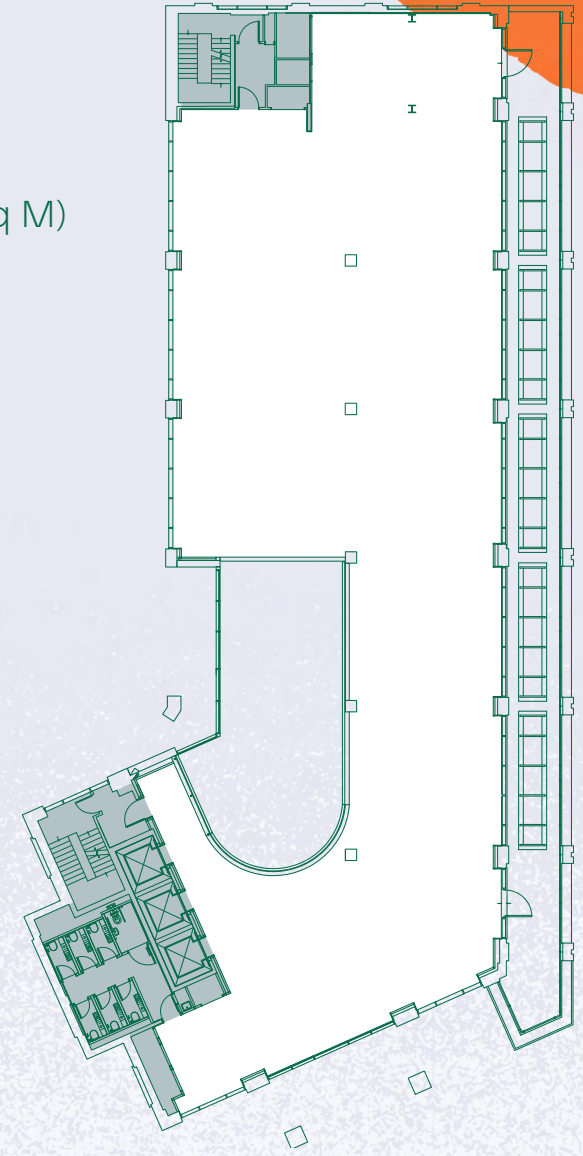


- Office
- Core
- Reception

For indicative purposes only.  
Not to scale.

### First Floor

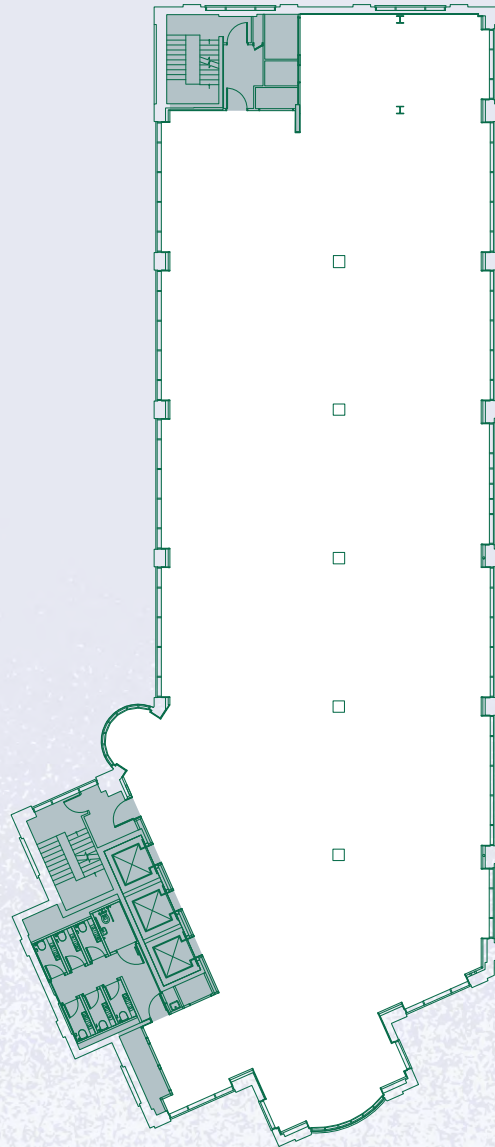
7,373 Sq Ft (685 Sq M)



# Floor Plans

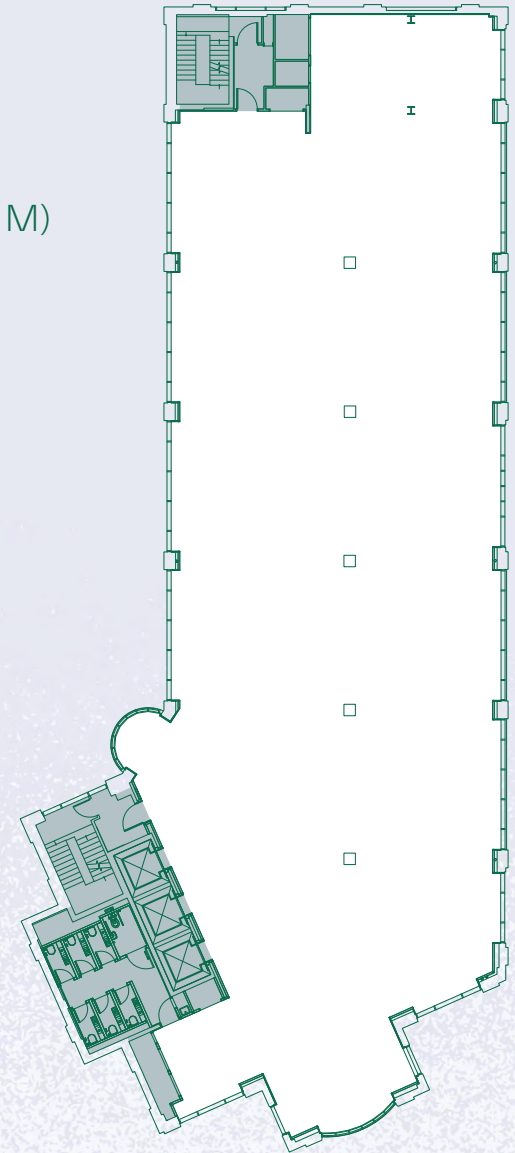
## Second Floor

9,117 Sq Ft (847 Sq M)



## Third Floor

9,117 Sq Ft (847 Sq M)



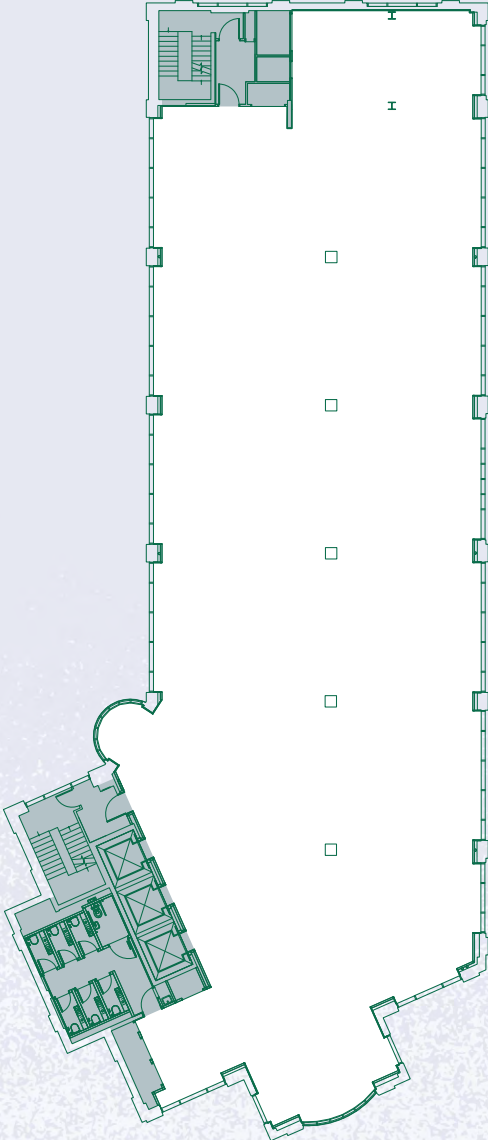
- Office
- Core

For indicative purposes only.  
Not to scale.

# Floor Plans

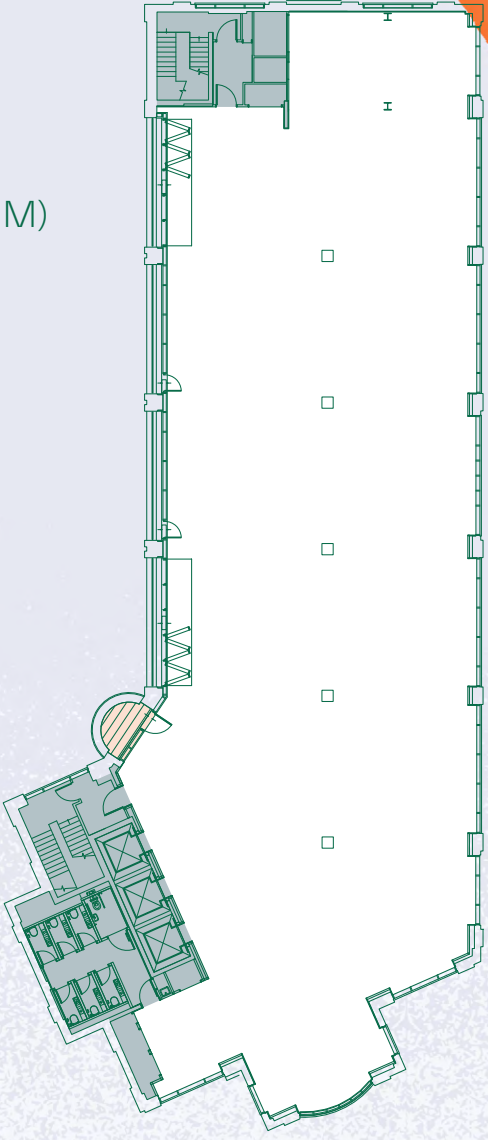
## Fourth Floor

9,117 Sq Ft (847 Sq M)




## Fifth Floor


8,826 Sq Ft (820 Sq M)




North


Office

Core

Balcony



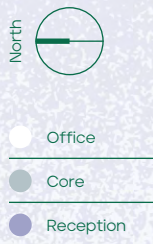
For indicative purposes only.  
Not to scale.

## Space Plans

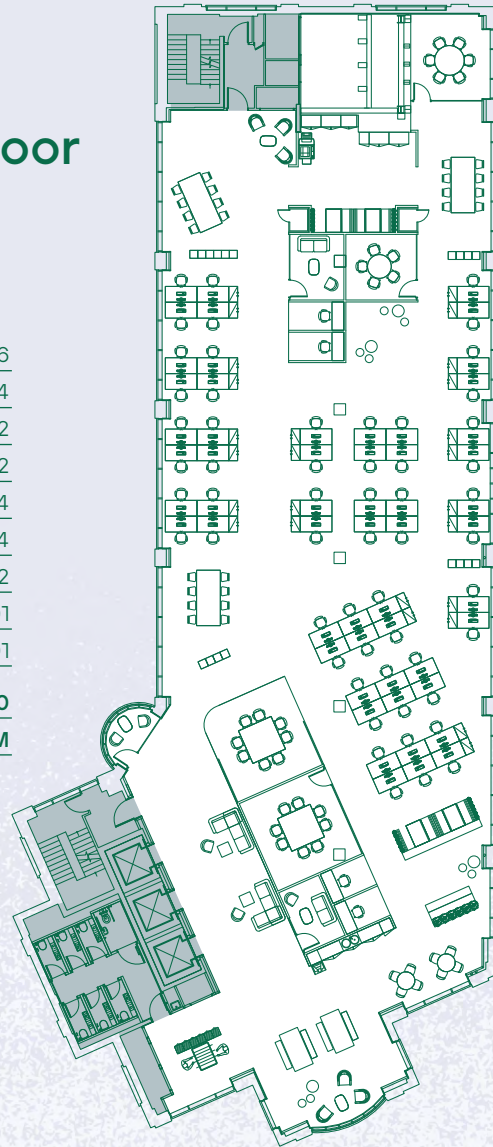
### Typical Upper Floor Space Plan

9,117 Sq Ft (847 Sq M)

Work stations	56
Agile work stations	24
8 Person meeting rooms	02
6 Person meeting rooms	02
Meeting booths	04
Focus rooms	04
Phone pods	02
Breakout area	01
Meet and greet area	01
<b>Total occupancy</b>	<b>80</b>
<b>Occupancy ratio</b>	<b>1:10 Sq M</b>



For indicative purposes only.  
Not to scale.



### Ground Floor Space Plan

7,363 Sq Ft (684 Sq M)

Work stations	46
Agile work stations	40
1 Person offices	03
8 Person meeting rooms	02
Informal meeting room	01
Meeting booths	01
Focus rooms	02
Breakout area	01
Meet and greet area	01
<b>Total occupancy</b>	<b>89</b>
<b>Occupancy ratio</b>	<b>1:8 Sq M</b>

